



Sterile Storage Cabinet

- Meets requirements of VA National Program Office for Sterile Processing (NPOSP) for storage of sterile items
- Meets VA directive 1116(2)
- Controls temperature, humidity & pressure within the storage chamber
- Maintains temperature & humidity conditions to meet desired set points
- Integrated cooling and steam humidifier
- Hospital grade 304 stainless steel construction
- Digital display for monitoring temperature humidity and status
- Casters; battery backup
- Self-modulating fan system delivers air to maintain proper air change rates
- Integrated HEPA filtration system exceeds ISO 7 cleanliness standards



Models Available

| Model | Description | Sell Price |
|--------------------|--|--------------|
| SSC4300 | <i>Overall: 72.3"H X 30.37"W X 29.18"D Shelves: 5 stainless steel shelves 27 3/4"W x 11"D with 7" spacing in between</i> | \$16,162.00* |
| SSC4300MOD1 | <i>Overall: 74.5"H X 36"W X 35"D Shelves: 4 stainless steel shelves 33"W x 16"D with 9" spacing between shelves</i> | \$18,320.00* |
| SSC4300MOD2 | <i>Overall: 72.3"H X 30.37"W X 38"D Shelves: 5 stainless steel shelves 27 3/4"W x 18"D with 7" spacing</i> | \$18,190.00* |

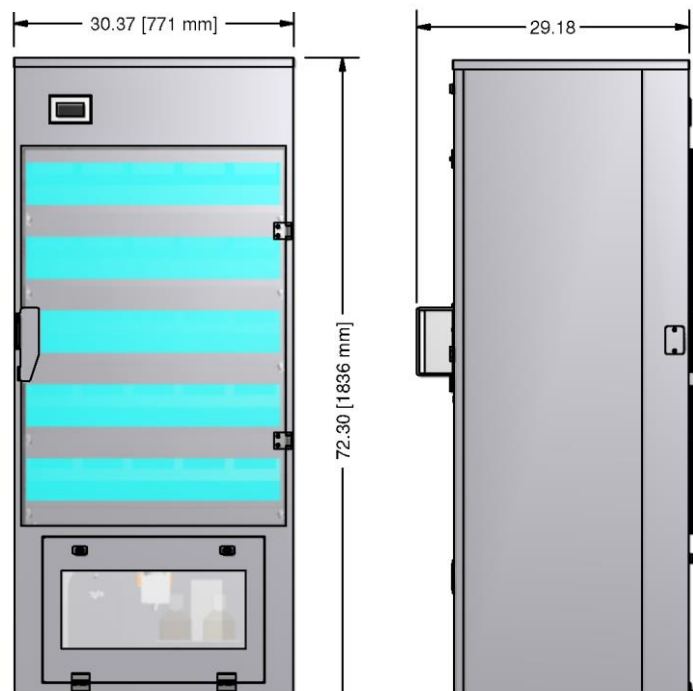
*Does not include shipping charges



SSC4300 - \$16,162.00*

- Dimensions: 72.3”H X 30.37”W X 29.18”D
- Hospital grade 304L Stainless steel cleanable construction.
- Integral mechanical cooler to maintain 66-75F payload temperature setpoint.
- Integral steam humidifier in the payload storage area to be supplied with Demineralized sterile water bottles to be replaced by nursing staff.
- Condensate collection system using collection bottles to be hand emptied by nursing staff.
- Built in recirculation fans and HEPA filtration system to ISO 7 levels.
- Unit mounted casters for mobility.
- UPS battery backup for temporary power backup protection.
- See through glass doors (4) stainless steel pullout shelves sized to accommodate 33" W X 16" D shelves with 9" space between shelves.
- (5) stainless steel pullout shelves 27 3/4"W x 11"D with 7" spacing in between; sized to accommodate (25) VA spec storage containers.
- Onboard DDC control system utilizing a digital display for monitoring temperature, humidity and status.
- 120V Hospital grade 10' long plug in cord.
- Pressure monitor with alarm
- Unit must be installed in a heated normal indoor work environment, cannot be installed in an unconditioned space.
- Warranty: 1 year parts
- Allow approx. 8-10 weeks for production.

*Does not include shipping charges; volume discounts available with 4 or more



SSC4300MOD1 - \$18,320.00*

- Dimensions: 74.5" High X 36" Wide X 35"Deep
- Hospital grade 304L Stainless steel cleanable construction.
- Integral mechanical cooler to maintain 66-75F payload temperature setpoint.
- Integral steam humidifier in the payload storage area to be supplied with Demineralized sterile water bottles to be replaced by nursing staff.
- Condensate collection system using collection bottles to be hand emptied by nursing staff.
- Built in recirculation fans and HEPA filtration system to ISO 7 levels.
- Unit mounted casters for mobility.
- UPS battery backup for temporary power backup protection.
- See through glass doors
- (4) stainless steel pullout shelves sized to accommodate 33" W X 16" D shelves with 9" space between shelves.
- Onboard DDC control system utilizing a digital display for monitoring temperature, humidity and status.
- 120V Hospital grade 10' long plug in cord.
- Unit must be installed in a heated normal indoor work environment, cannot be installed in an unconditioned space.
- Warranty: 1 year parts
- Allow approx. 8-10 weeks for production.

*Does not include shipping charges; volume discounts available with 4 or more

SSC4300MOD2 - \$18,190.00*

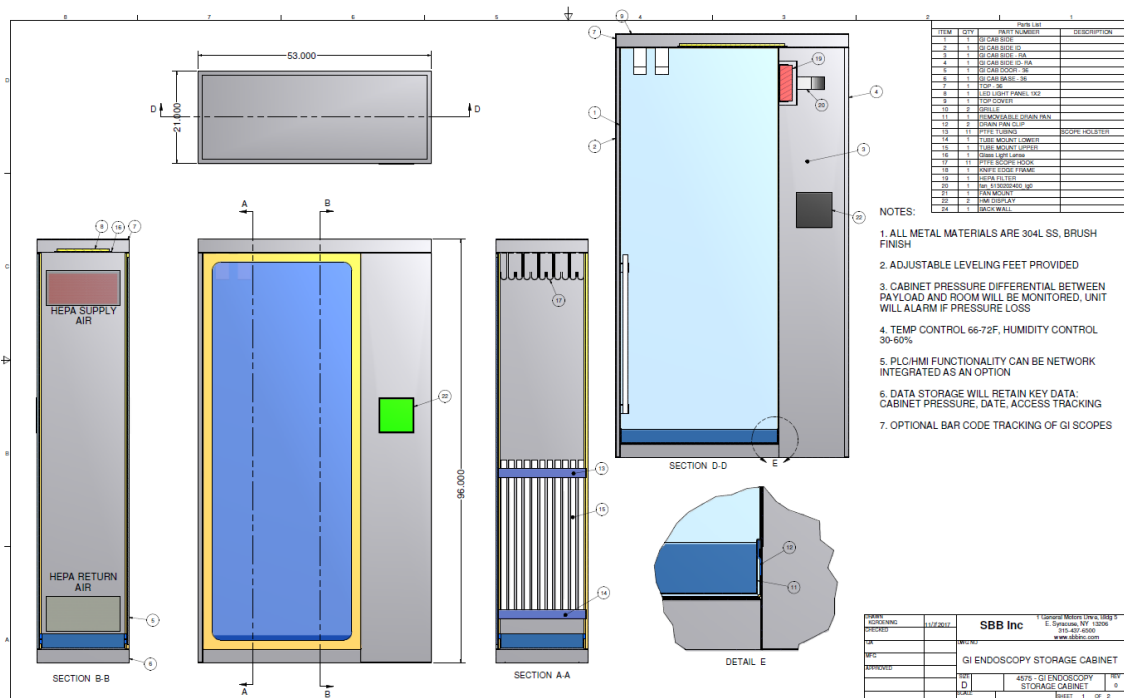
- Dimensions: 72.3" High X 30.37" Wide X 38" Deep
- Hospital grade 304L Stainless steel cleanable construction.
- Integral mechanical cooler to maintain 66-75F payload temperature setpoint.
- Integral steam humidifier in the payload storage area to be supplied with Demineralized sterile water bottles to be replaced by nursing staff.
- Condensate collection system using collection bottles to be hand emptied by nursing staff.
- Built in recirculation fans and HEPA filtration system to ISO 7 levels.
- Unit mounted casters for mobility.
- UPS battery backup for temporary power backup protection.
- See through glass doors
- (5) stainless steel pullout shelves sized to accommodate 27-3/4" W X 18" D shelves with 7" space between shelves.
- Onboard DDC control system utilizing a digital display for monitoring temperature, humidity and status.
- 120V Hospital grade 10' long plug in cord.
- Unit must be installed in a heated normal indoor work environment, cannot be installed in an unconditioned space.
- Warranty: 1 year parts
- Allow approx. 8-10 weeks for production.

*Does not include shipping charges; volume discounts available with 4 or more

Endoscopy Storage Cabinet - \$21,834*

- Dimensions: 96" High X 53" Wide X 21" Deep
- Hospital grade 304L Stainless steel cleanable construction.
- Integral mechanical cooler to maintain 66-72F payload temperature setpoint.
- Integral steam humidifier to maintain 30-60% in the payload storage area when supplied with Demineralized sterile
- Built in recirculation fans and HEPA filtration system to ISO 7 levels.
- Cabinet differential pressure control.
- (11) PTFE Scope hooks with Tip holsters to protect tip ends
- Adjustable leveling feet
- See through glass doors
- Onboard DDC control system utilizing a digital display for monitoring temperature, humidity and status.
- 120V Hospital grade 10' long plug in cord.
- Warranty: 1 year parts
- Allow approx. 10-12 weeks for production.

*Does not include shipping charges; volume discounts available with 4 or more



GI PASSTHRU

- Dimensions: 96" High X 53" Wide X 21" Deep
- Hospital grade 316L Stainless steel cleanable construction.
- Removable PTFE Endoscopy tip holsters.
- Removable PTFE Endoscopy hangers.
- Removable 316L Stainless steel drip tray.
- Electronic punch locks with interlocking magnetic latches
- Cabinet pressure differential between both load and unload rooms will be monitored and displayed
- PLC controller and HMI interface will prevent both doors being open simultaneously under normal operating conditions, with a manual over-ride command. Access to PLC and HMI Functions will be limited by password authority.
- Built in recirculation fans and HEPA filtration. Fan will speed up automatically and increased air delivery when a door is opened. Controls will back down fans to normal pressure differential when doors are closed.
- Cabinet Pressure differential
- Warranty: 1 year parts
- Allow approx. 14 weeks for production.

*Does not include shipping charges; volume discounts available with 4 or more

Optional Additions:

- Mechanical thermoelectric cooler
- Steam humidifier for humidity control

Services

| | | |
|--------------|-------------------------------|--------------|
| • SSC4300-OS | On-Site Setup | \$1,000.00 |
| • SSCPM | Annual Preventive Maintenance | \$6,318.61** |

- Check HEPA Filter - Estimated replacement 1 time per year (price includes cost of HEPA filter)
 - Check Airflow, Check Filter Integrity, Check Static Pressure
 - Replace HEPA Filter if needed
- Check all hoses, clamps, barbs - Estimated replacement 1 time per year (price includes cost of these if needed)
 - Condensate, humidifier, pressure
- Check humidifier
 - Inspect heater element & liquid level Sensor
- Check thermoelectric cooler
 - Current, voltage, temperature, and fans
- Check electric heater
 - Current, voltage, temperature, and fan
- Check recirculation fans
- 60601 electrical test
 - Ground Leakage Verification
 - Chassis/ground resistance verification
- Check cabinet pressure
- Check sensor calibration
- Check all electrical cords and connections
- Check door seals and mechanisms
- Check all gasketing

**Volume discount available if there is more than 1 unit that needs PM **

Parts

| | |
|----------------------------|------------|
| • Humidifier | \$268.81 |
| • Thermoelectric Cooler | \$1,935.48 |
| • Electric Heater | \$86.02 |
| • Recirculation Fans | \$64.52 |
| • HEPA Filter | \$269.64 |
| • Hoses, Clamps, and Barbs | \$165.43 |

Accessory

- SSC4300-DL - data logging option to be downloaded via Ethernet connection

*Note: Order with equipment; factory installed.

To Place An Order:

- Specify model number _____
- Quantity _____
- Data logger? Yes/No
- Ship to zip code _____
- Is there a dock at the facility? Yes/No
- Services? Yes/No
 - On-site setup
 - Annual PM
- Special instructions: _____

Contact Aldevra:

- Phone: 269-350-1337
- Email: sales@aldevra.com
- Address: 3707 S Westnedge, Kalamazoo, MI 49008
- DUNS: 830063496
- Tax ID: 26-4111029
- CAGE Code: 5EEK3
- Certifications:
 - CVE Verified Service Disabled Veteran Owned Small Business
 - Certified Minority Owned Enterprise
 - 8(a) Small Disadvantaged Business
 - Certified historically underutilized business zone (HUBZone) firm

